



**R**eputation is known to be a ubiquitous spontaneous and highly efficient mechanism. The company promotion or reputation of a product depends also on a logo, a name or an illustration of its activity.

On a badge, it's a very economical way to attract attention. A badge is not only designed to display a person's identity but also to valorize it in the eyes of its interlocutor.

SINCE

1999

WE PRINT

Mediasoft Development  
228, rue de la Convention  
75015 Paris – France  
<http://www.emedia-cs.com>

# eMedia-Cards CS

The ultimate tool for card design and printing

## → Prints on all card printers

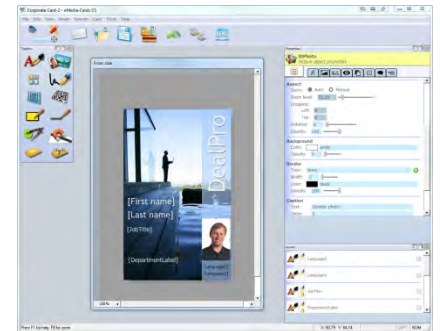
Supports all the major brands of personal card printers: Datacard, Evolis, Fargo, Magicard, Eltron-Zebra. Also support inkjet and laser printers.

## → Two tiered mode

As the person that prints the cards out isn't the one that designed the template, no particular skill is needed for the operator.



Operator view



Designer view

## → Data storage

The Standard Edition connects to Microsoft Excel™ datasheets, with an unlimited number of records. You can even work with your own existing files.

In addition, the Professional and Expert Editions connect to any Standard Databases (Oracle™, MySQL™, Microsoft SQL Server™, Microsoft Access™, etc)

## → Batch printing

Can print a series of records based on a request, record numbers, value in a field or a range of values in a field.

## → Automation

In the Professional and Expert Editions, the designer can build formulas or programs in VBScript to perform calculations or modify dynamically the card contents.

## → Ready for integration

Can be included in a third-party application as a COM Server component, so the integrator can enhance his own application to print out cards in minutes.

## → Mobile data input

Our free mobile application Wifimage+ allows everybody to print cards out remotely from an iPhone™ or an iPad™, including holder information and picture entered on the mobile device.

## → Full technical support

- Step-by-step guide provided on our internet web site (PDF format).
- Video tutorials on our YouTube™ channel over the internet.
- Support in English, French and Chinese through our internet web site or by e-mail. If an issue cannot be resolved by this way, our technicians can connect to your computer using a TeamViewer™ session.
- A Users' Club is also available to share experiences and to download additional materials such as pictures, templates and Software Development Kits.



## Comparison Chart

		Std	Pro	Exp
<b>GENERAL &amp; DESIGN</b>				
<b>Two tiered utilization</b>	Design mode for template designers, Operating mode for printing the cards. Password to prevent users from modifying the design.	●	●	●
<b>Multilingual</b>	English, French, Italian, Spanish, German, Dutch, Russian, Simplified Chinese	●	●	●
<b>Support &amp; Help</b>	e-mail, users forums, contact page and online help.	●	●	●
<b>Acquisition</b>	Twain™, WIA™, Video for Windows™, folder supervision, FTP supervision, Wifimage™.	●	●	●
<b>Pictures format</b>	BMP, JPG, TIF, WMF, GIF and PNG. Transparency support.	●	●	●
<b>Pictures storage</b>	As files on a local or network disk, in the cloud, or in the template itself.	●	●	●
<b>Imaging tools</b>	Zoom, crop, rotate and change opacity of pictures. Direct link to your favorite picture edition software.	●	●	●
<b>Front &amp; back</b>	Design of the both sides of the card.	●	●	●
<b>Layering</b>	Adobe™ PhotoShop™-like layering.	●	●	●
<b>Texts</b>	Ability to use all the TrueType contour fonts. Static and dynamic texts with ability of automatic resizing.	●	●	●
<b>Barcodes QR-Codes</b>	2 of 5, 3 of 9, Code 128, EAN-8/13 / +2/+5, EAN-128 & Codabar, QR-Codes low, medium, quality & high.	●	●	●
<b>Geometrical figures</b>	Lines & diagonals; opaque, semi-transparent or transparent rectangles, circles and ellipses.	●	●	●
<b>Custom card sizes</b>	Ability to create up to 12 new card sizes. You can now print on everything with eMedia-CS.	○	●	●
<b>ENCODINGS</b>				
<b>Magnetic strip</b>	ISO and non-ISO tracks #1, 2 and 3, JIS-Type II. Eased programming interface.	●	●	●
<b>Smart Card</b>	Through any Smart Card application.	○	●	●
<b>Contactless</b>	Through any Contactless Smart Card application.	○	●	●
<b>Contactless RFID</b>	Internal encoding and reading of Mifare Classic 1K and 4K cards. Internal reading of 125KHz RFID Tags.	○	○	●
<b>DATABASES</b>				
<b>MS-Excel™ Datasheets</b>	Ability to connect to Microsoft Excel™ datasheets. Unlimited number of records.	●	●	●
<b>Standard Databases</b>	Ability to connect to industry-class databases (Oracle™, Microsoft™ SQL Server™, MySQL™, Microsoft™ Access™, etc) through ODBC & OLEDB.	○	●	●
<b>Batch printing</b>	Print multiple database records with search.	●	●	●
<b>Pictures storage</b>	As path to files.	●	●	●
<b>Pictures storage</b>	As binary objects in Microsoft SQL Server™ and Oracle™.	○	●	●
<b>UTILITIES</b>				
<b>Formulas</b>	Ability to automatically calculate objects contents.	○	●	●
<b>Scripting</b>	Support of <i>VBScript</i> , to extend the capabilities of the software by setting values and change properties.	○	●	●
<b>Plug-ins</b>	Extend the features of eMedia-CS with third-party components.	○	●	●
<b>COM Server features</b>	Easily integrate eMedia in your own applications and documents. Complete control of eMedia.	○	●	●
<b>Wifimage +</b>	Integrate eMedia-CS in a Wifimage+ solution for entering data, pictures and signatures from an iPad or iPhone Device. Print remotely or digitize.	○	●	●
<b>CoolReader™ Technology</b>	Select database records by reading a barcode, a magnetic strip, the Mifare or the RFID Tag serial.	○	●	●
<b>Signature Pad Support</b>	A full support for Signature Pads, for an easy signature acquisition.	○	●	●
<b>LICENSING</b>				
<b>Software Key</b>	No broken or lost dongle. License activation can be performed 24/7.	●	●	●
<b>Single license</b>	The software can be used on a single computer.	●	●	○
<b>Network license</b>	The software can be used on up to 10 computers on the same network.	○	○	●

## Supported Operating Systems

- Microsoft Windows™ XP, Vista, 7, 8 and 10, 32 / 64-bits
- Microsoft Windows Server™ 2003, 2008, 2012, Windows Home Server™, 32 / 64-bits

## Minimal recommended hardware

- Dual Core Processor, 2.5 GHz
- 1.5 GB RAM
- DirectX 9.0 Graphics Card
- Microsoft Windows™ OS XP+, 32/64 bits.



*These specifications are not binding and are subject to modifications without prior notice.*